

EMC and Alex All Round Extruded Cases

Product Description

The standard Alex and EMC cases are ideal for applications where EMC requirements are more demanding.

The Alex case is a six part construction with the front, sides and back, all being made from extrusion. This creates a rebate around the top and bottom of the case in which the top and bottom covers can sit, resulting in excellent EMC performance.

The EMC case is identical to the Alex case, except for the addition of right angled brackets in each of the four corners of the case. This further improves the EMC performance and increases the overall rigidity of the case.

We are happy to quote to vary the size, finish or construction of any unit .

Alex All Round Extruded Cases

Product Features

- Constructed to provide enhanced EMC performance
- The front panel is finished in dawn grey with the rest of the case being clear anodised.

Part no.	Description	Weight
050300	1RUx100mm	0.70kg
050400	1RUx150mm	0.90kg
050500	1RUx250mm	1.30kg
050600	1RUx300mm	1.40kg
050700	2RUx100mm	1.00kg
050800	2RUx150mm	1.20kg
050900	2RUx250mm	1.60kg
051000	2RUx300mm	1.80kg
051100	3RUx100mm	1.40kg
051200	3RUx150mm	1.70kg
051300	3RUx250mm	2.30kg
051400	3RUx300mm	2.50kg



EMC Cases

Product Features

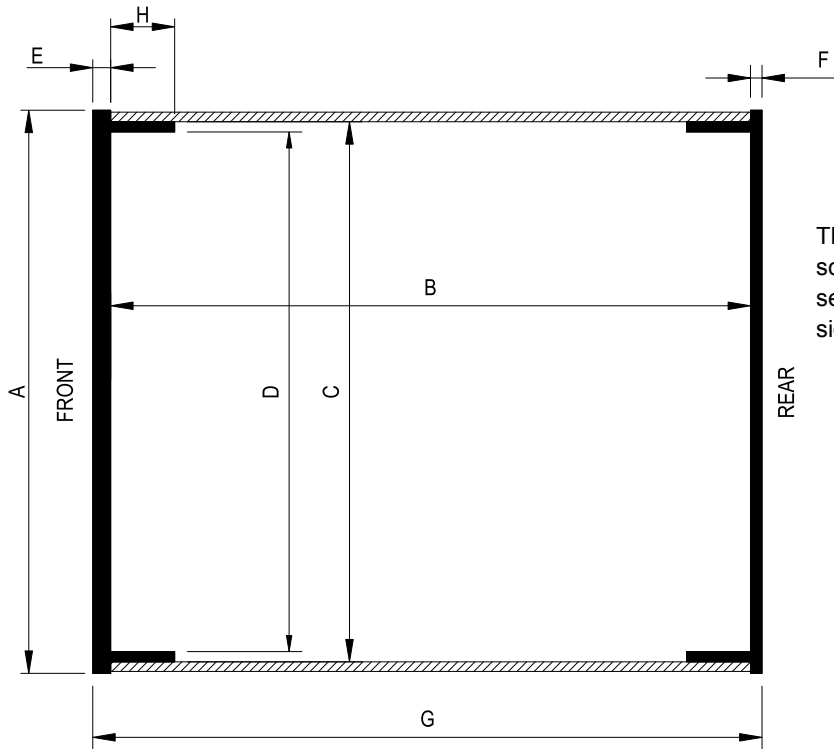
- Provides further improved EMC performance due to the addition of right angled brackets in each of the four corners of the case
- The construction allows housing of larger internal parts and for the case to remain ridged even with the top and bottom covers removed
- The front panel is finished in dawn grey with the rest of the case being finished in Alocrom 1200



Part no.	Description	Weight
051500	1RUx100mm	0.70kg
051600	1RUx150mm	0.90kg
051700	1RUx250mm	1.30kg
048800	1RUx300mm	1.40kg
051800	2RUx100mm	1.00kg
051900	2RUx150mm	1.20kg
052000	2RUx250mm	1.60kg
052100	2RUx300mm	1.80kg
052200	3RUx100mm	1.40kg
052300	3RUx150mm	1.70kg
052400	3RUx250mm	2.30kg
052500	3RUx300mm	2.50kg

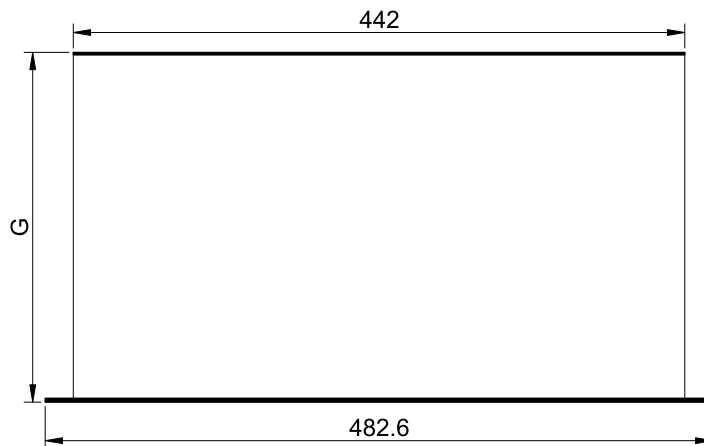
Case sizes

The following information applies to the Joggle, Alex and EMC ranges of cases.



The diagram to the left (not to scale) shows a general cross section with nominal dimensions.

The diagram to the right (not to scale) shows a general plan with nominal dimensions.



Case Size	A	B	C	D	E	F	G	H
1RUx100mm	43.7	100.0	40.3	37.1	2.8	1.8	104.6	10.00
1RUx150mm	43.7	150.0	40.3	37.1	2.8	1.8	154.6	10.00
1RUx250mm	43.7	250.0	40.3	37.1	2.8	1.8	254.6	10.00
1RUx300mm	43.7	300.0	40.3	37.1	2.8	1.8	304.6	10.00
2RUx100mm	88.0	100.0	84.4	81.2	2.8	1.8	104.6	10.00
2RUx150mm	88.0	150.0	84.4	81.2	2.8	1.8	154.6	10.00
2RUx250mm	88.0	250.0	84.4	81.2	2.8	1.8	254.6	10.00
2RUx300mm	132.6	300.0	84.4	81.2	2.8	1.8	304.6	10.00
3RUx100mm	132.6	100.0	129.4	126.2	2.8	2.8	105.6	10.00
3RUx150mm	132.6	150.0	129.4	126.2	2.8	2.8	155.6	10.00
3RUx250mm	132.6	250.0	129.4	126.2	2.8	2.8	255.6	10.00
3RUx300mm	132.6	300.0	129.4	126.2	2.8	2.8	305.6	10.00